

PONDERING the PURPOSE of PRESIDENTIAL FOREIGN TRAVEL

© WAYNE MOODY OCTOBER 7, 6:40 A.M., 2013

It was one hundred and thirty years after the Declaration of Independence, a dot in history long celebrated as America's "Significant Moment" benchmark. One hundred and thirty years was more than half again the age of the nation today, now 237 years; as measured from that precious July 4, 1776 dot. On November 9, 1909, Teddy Roosevelt, the sworn 26th United States President, and his First Lady travelled by American Battleship Louisiana, to a foreign nation; they were the first sitting American First Couple to do so. Other metrics, like 130 years and July 4, 1776, will be very important threads running through this piece; these, and the others to follow, are the dots to follow and link.

Teddy Roosevelt, the man, the citizen, had his "Significant Moment" subsumed within that of America. Once President, Teddy Roosevelt plugged right into the interests of the nation – in many unique ways that could be read in his and the nation's horoscope symbolism. One reading I dubbed America's 'War Impulse' Pattern. Why was it 130 years before a U.S. President journeyed abroad, what is the connection to the military, and why him?

In the U.S. "Significant Moment", a virtual map grid was laid down for the life of the new nation, marking out important select symbolic astrological horoscope parts of the body of the 'new' U.S. entity, around the Earth. One part, for the purposes of this writing, is the U.S. Mars at **21 Gemini 22'**, involved with the U.S. **Neptune (22 Virgo 25')** in a vital horoscope pattern. The Mars placement, when converted into a map format, traces dots to very important places on land and sea around the Earth.

U.S. INTERNATIONAL ASTRO*CARTO*GRAPHY ®A*C*G RELOCATION MAP OF HER FOUR ANGULAR MARS LINES....

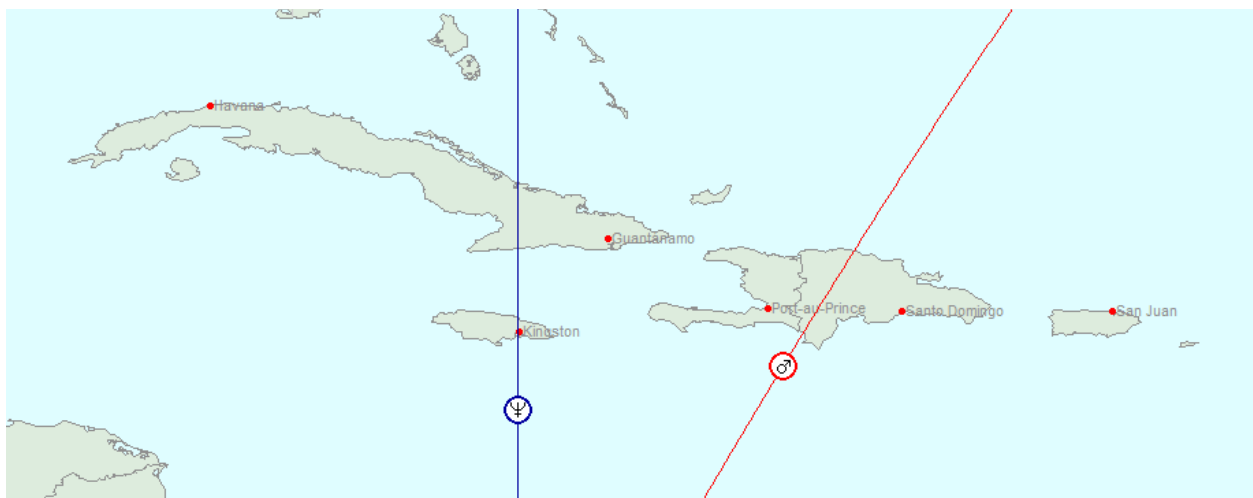


Sensitive to these special places of emphasis, through the Mars/Neptune pattern, the U.S. moved early in her existence, on December 2, 1823, to protect certain specific areas of the Earth through her military strength; Teddy Roosevelt (former Assistant Secretary of the Navy) plugged right into this ‘protectionist’ U.S. mindset. The attitude was captured in this section from the Monroe Doctrine, which warned all European nations that efforts to further colonize or interfere in the America’s (North, Central, South, and Mexico) would be considered acts of aggression against the U.S.:

“The occasion has been judged proper for asserting, as a principle in which the rights and interests of the United States are involved, that the American continents, by the free and independent condition which they have assumed and maintain, are henceforth not to be considered as subjects for future colonization by any European powers.”

This policy, a historic benchmark, remained in force well into the Clinton and Obama Presidencies, on stages in Haiti. In the horoscope of the Monroe Doctrine “Significant Moment” (set for December 2, 1823), the transiting Sun was in Sagittarius (9-10 Sagittarius), having crossed the critical U.S. **ASCENDANT ANGLE**: it was the day of a 9 Sagittarius +New Moon and transiting Jupiter had recently returned in the U.S horoscope to **5 Cancer 56’**, while simultaneously, transiting Mars was at **20 Virgo +**, waxing towards stimulating the U.S Mars/Neptune pattern.

U.S. INTERNATIONAL ASTRO*CARTO*GRAPHY ®A*C*G RELOCATION MAP TO CARIBBEAN NATIONS OF CUBA, JAMAICA, HAITI, DOMINICAN REPUBLIC, AND PUERTO RICO....



The U.S. Sagittarius rising/ascending U.S. horoscope has Jupiter as her **7 Sagittarius 37’ ASCENDANT ASC ANGLE** Ruler. Roosevelt, the man, had his own Jupiter (at **21 Gemini 05’ retrograde**) rising above his ASC Angle (**24 Gemini 39’**; throughout his life, Roosevelt had connections with the U.S. military. This signature pointed squarely at the man’s long experience and interest in both the military, international affairs as codified in the Monroe Doctrine. Let us pause a moment and openly state that President Teddy Roosevelt’s Jupiter was almost exact to the U.S. Mars placement at **21 Gemini 22’**. Additionally, his Jupiter was in a tight square aspect to his Neptune placement at **22 Pisces 29’ retrograde**; pointing

to Roosevelt's lifelong interest in U.S. Naval Strategy on the world's oceans. Indeed, Teddy Roosevelt was considered one of America's great naval strategists, having written a book on the War of 1812, while an undergraduate at Harvard; he evolved to become the President who initiated the voyage of the "White Fleet" around the Earth, from December 16, 1907 to February 22, 1909; it was a deliberate show of U.S. Naval might. The White Fleet made 20 Port calls around the Earth, crossing through 'all' of the active U.S. Mars Zones (see map below), from the U.S. Mars DESCENDANT Zone through Callao, Peru (February 20 1908), The 35 North PARAN (latitude) Zone through Yokohama, Japan (October 18, 1908), to the U.S. Mars NADIR sweeping Messina and Naples, Italy (January 9, 1909), then through the Mediterranean Sea along 35 North (again the PARAN Zone), to Gibraltar on January 31, 1909.

The planet Jupiter's symbolism was very much in evidence during the near decade-long season that Teddy Roosevelt served as President, beginning on September 14, 1901. President McKinley's Presidency started on March 4, 1897 with transiting Pluto, Neptune, and Mars, all between 11 and 22 Gemini; the U.S. Mars had just made his RETURN to 21 Gemini 22. The McKinley/Roosevelt Presidency was a time when transiting Pluto, moved through Gemini and began shadowing the American Mars/Neptune pattern activation, as seen in events staged in Mars' derivative places around the Earth; America's war with Spain began April 25, 1898, on stages in Cuba, Puerto Rico, the Philippines, and Guam. In the war's beginning days, transiting Mars was at 24 Pisces 06', to transiting Pluto/Neptune at 13 – 20 Gemini. That period awoke a new or renewed American interest, in U.S. Mars dots running to Germany, and the Caribbean Sea Region. Remember, that King George III used Hessian Soldiers from what is today German territory to wage war on the 13 Colonies.

After President McKinley's assassination in Buffalo, NY (it occurred in the heart of the U.S. Neptune **MIDHEAVEN** zone; with the U.S. relocated MIDHEAVEN to Buffalo, NY, being **20 Virgo 43'**), Roosevelt was sworn into office during the afternoon of September 14, 1901, with transiting Pluto at 18 Gemini 42'. During the first years of Teddy Roosevelt's Presidency, transiting Uranus faced off with transiting Pluto from 12 Sagittarius 55' to 24 Sagittarius 56', synchronizing the February 1903 Venezuela/European Nation Debt Crisis, when the German Navy fired on a Venezuelan Fort under the 'active' U.S. Mars DESCENDANT line.

President Roosevelt travelled to the newly established nation of Panama on November 9, 1906, when the U.S. Progressed Moon was in early Sagittarius, with the Progressed U.S. Sun (at 20 Scorpio 30') was on the Progressed U.S. horoscope 7th House cusp at 22 Scorpio 13; simultaneously, Roosevelt's own Progressed horoscope Venus and Sun were at 21-22 Sagittarius, exactly opposing his Jupiter (21 Gemini 05' retrograde)/ASC (24 Gemini 39'), on his natal 7th House (lighting up the importance of foreign issues) angle. Generally, we recognize the sign Sagittarius and the 7th House of a horoscope as corresponding with foreign contacts, relations with foreign powers, and long-distance travel. Why this is proves so in our example, turns out to be a fascinating astrological story:

"National events are not only seen in the United States Chart, but they are reflected in the President's horoscope. In other words, the fortune of a nation usually coincides with the progressed aspects of its president." From "Horoscopes of the U.S. Presidents" ~ Doris Chase Doane ~ 1952

... Summarizing, when you consult the horoscopes and maps of Teddy Roosevelt and the U.S.; they combine to focus upon the mapped angular U.S. Mars lines around the Earth, to tell a compelling story. What about these maps?

We have already seen these maps early on, this **ASTRO*CARTO*GRAPHY®A*C*G Map** is a modern form of relocation tool, computer generated using the metrics of the U.S. “Significant Moment” (see end of piece), distilling out all symbols save Mars. In the previously shown maps, I have distilled out all planet symbols but Mars in the International gestalt of the U.S. horoscope; a second close-up Caribbean Map includes Neptune with Mars; both angular bodies depicted as a series of connected dots plotted all across the Earth through the region. The connected dots merge into lines, providing a startling gestalt, which when read with transit history, are simultaneous with much of the American war experience over 237 years. Other lines, known as PARANS, run east and west along the latitudes, and fill in much additional detail, where major lines are not seen, marking a field of stages covering ‘all’ of American military conflict. They point, for example, to America’s current ‘longest wars’ in the nation’s history and other military flash-points; places like Syria. It was this latest conflict in Syria which led to the research for this piece. The details of that **35 North PARAN ZONE** story will be told in a part 2 of “PONDERING THE PURPOSE OF PRESIDENTIAL FOREIGN TRAVEL”.

Right now, we are focused entirely upon that first Presidential trip abroad by Teddy Roosevelt, which began on November 5th or 9th, 1906 (I have conflicting sources), on the USS Battleship Louisiana (BB-19), a trip which happened to have a military component to it; no irony to the fact that the USS Louisiana was laid down on Feb 7, 1903, with the Moon and Pluto, were both together at **17 Gemini 47’** during the day; this battleship transporting the 26th President, like an ‘Air Force One’, embodied the U.S. Mars ‘War Impulse’ in full battle dress. The battleship departed from Piney Point, Maryland, just 18 miles east of the U.S. ‘active’ Neptune MIDHEAVEN.

PRESIDENT TEDDY ROOSEVELT AND HIS FIRST LADY DEPARTED FROM PINEY POINT, MARYLAND, ABOARD A BATTLESHIP IN ROUTE TO PANAMA....



Roosevelt's Administration enthusiastically enforced the century-old Monroe Doctrine; a document, which stipulated that European Nations remain out of the Western Hemisphere; and President Teddy Roosevelt further believed that if the U.S. made a 'show of force' demonstration", they, the international community, would hesitant to mess with America. Roosevelt's December 1904 Corollary to the Monroe Doctrine and was named the "Big Stick Diplomacy", and the expression was taken from an African proverb. In a letter written in 1900, a year before he became President, Teddy Roosevelt wrote, "I have always been fond of the West African proverb:

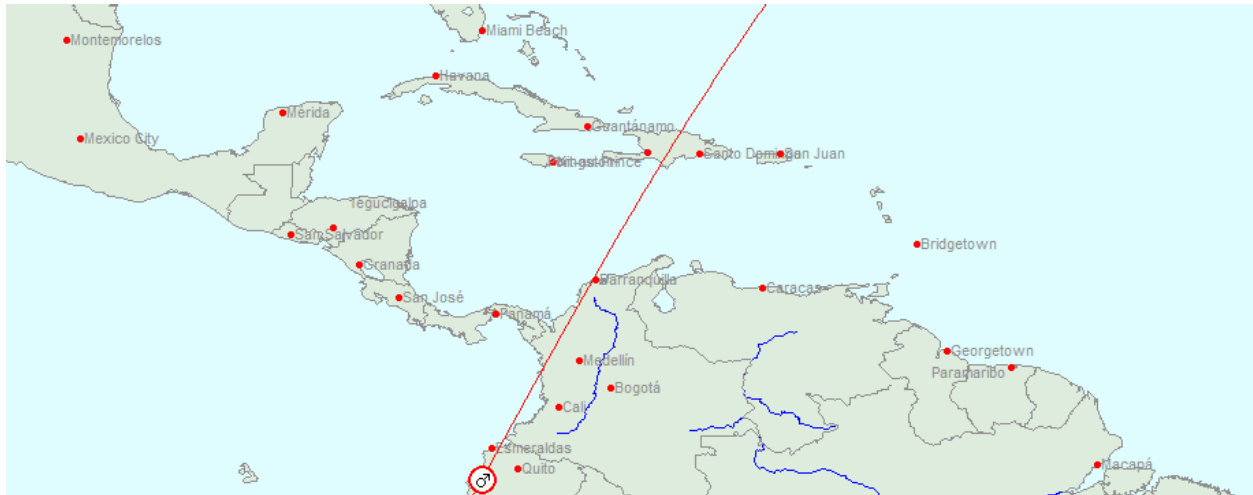
"Speak softly and carry a big stick; you will go far."

Transiting Pluto was at 20 Gemini 56' retrograde in December 1904, waxing tightly to the U.S. Mars placement at 21 Gemini 22', when the Roosevelt Corollary to the Monroe Doctrine was adopted in December 1904.

The planet Jupiter has long been corresponded with travel and foreign relations; it also has a reputation for synchronizing a season of expansion of whatever horoscope issues/symbols are contacted; transiting Pluto to the U.S. Mars can easily seen in the **BIG** Stick attitude of Roosevelt and the U.S. President Roosevelt, with his personal 'exact' Jupiter/ASC/square Neptune contact to the U.S. Mars, both instigated and expanded the Monroe Policy through his Big Stick Corollary. That BIG Stick was a potent Mars signature. Both Roosevelt's and the U.S. Neptune placements and aspects, correspond well with the epic struggle against European nations to secure the rights to build a canal through the Isthmus of Panama with the purpose of linking two great bodies of water. U.S. strategic National Security interests of the U.S. Navy (Roosevelt had been McKinley's Assistant Secretary of the Navy from 1897-1898) and those of American Captains of Commerce demanded a canal be built. The eventual Panama Canal short-cut was America's not-so-hidden purpose for focusing upon the Columbia/Panama region in the first place.

From 1903 to 1906, transiting Pluto was slowly making his epic journey through late Gemini, simultaneously making contact to the subsumed President Roosevelt's horoscope ASC/Jupiter/Neptune pattern; synchronistically 'activating' the U.S. Mars/Neptune aspect (expressing warlike in all its angular relocations). During those early years of the 20th Century, President Teddy Roosevelt (famous for his military service in Cuba), presided over direct or covert military action in the Caribbean nations of Cuba, Domini Republic, Puerto Rico, Venezuela, Columbia, and what is now the nation of Panama.

THE U.S. MARS A*C*G ® MAP - MONROE DOCTRINE TERRITORY – MEXICO, CENTRAL AMERICA, CUBA, HAITI, DOMINICAN REPUBLIC, PUERTO RICO, AND THE NORTHERN COAST OF SOUTH AMERICA....



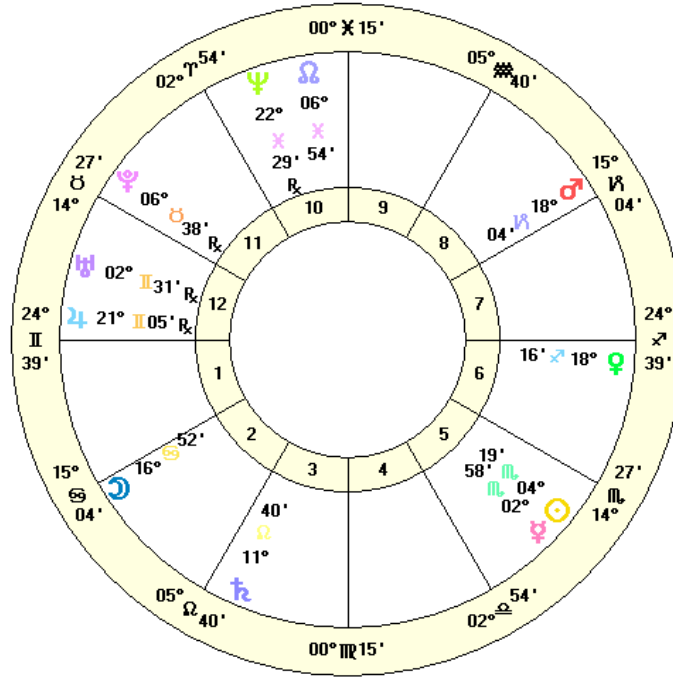
The years 1901-1909, saw Roosevelt’s Big Stick Diplomacy in action throughout North, Central, and South American nations, in the U.S. dominated former Spanish territories, Cuba and Puerto Rico, throughout the Caribbean; for ‘National Security’ reasons, both military and trade, the U.S. intrigued to take Panama from the Columbians. Roosevelt’s Big Stick was used several times in Latin America; notably from December 9, 1902 (transiting Pluto at 18 Gemini 44’ retrograde) – February 19, 1903 (transiting Pluto at 17 Gemini 42’ retrograde), against British, German, and Italian warships blockading Venezuelan ports. British, German, and Italian financial interests were being pursued by the German Navy. Transiting Uranus, another slow planet timing epic moments for America, was at 24 Sagittarius in 1903.

A look to the U.S. Mars A*C*G Map close-up reveals the American Mar DESCENDANT DSC, running through the regions tying all of these nations to American military interests. Remember, the territory was marked off, long before Roosevelt, by President Monroe in his Monroe Doctrine in December 1823. Born October 27, 1858, Teddy Roosevelt’s Jupiter lines traced through the outer Caribbean, the Lesser Antilles, and Windward Islands, like a prophylactic barrier; it is a fact that most of Roosevelt’s relocations (actual travel) to the region (1st-hand or vicarious contacts) had Gemini ASCENDANTS with the President’s Jupiter operating out of the relocated 1st (action) House:

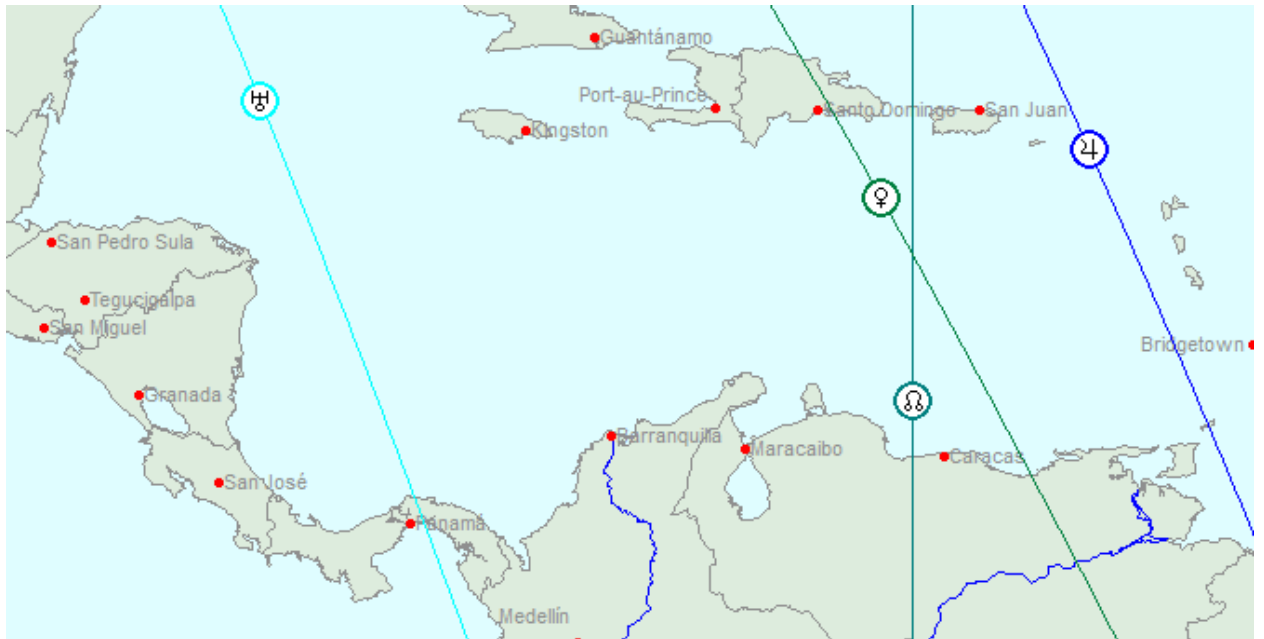
- Colon, Panama 2 Gemini 02’
- Panama City, Panama 2 Gemini 14’
- Havana, Cuba 5 Gemini 22’
- San Juan Hill, Cuba 10 Gemini 36’
- Guantanamo, Cuba 11 Gemini 14’
- Caracas, Venezuela 15 Gemini 04’
- Santo Domingo, Dominican Republic 15 Gemini 47’
- San Juan, Puerto Rico 19 Gemini 16’

HOROSCOPE OF TEDDY ROOSEVELT....

Teddy Roosevelt
 New York, NY
 Oct 27, 1858
 07:45:00 PM LMT

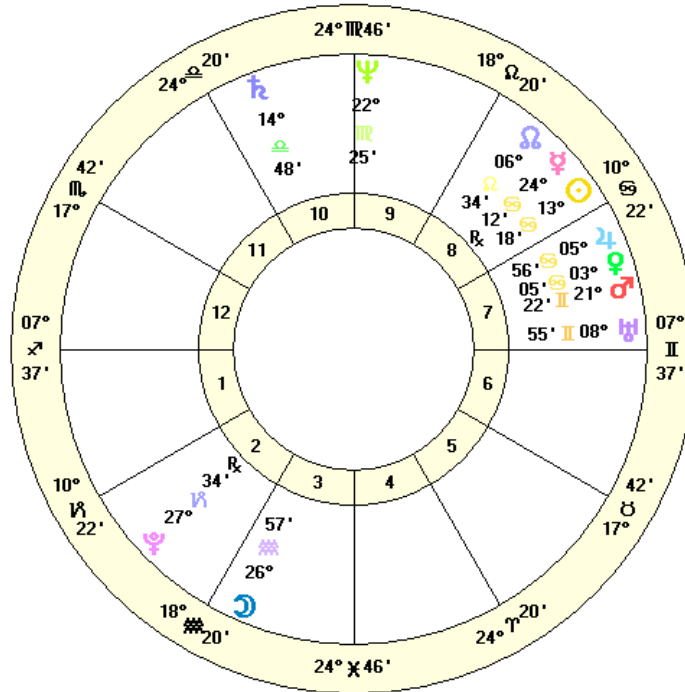


PRESIDENT TEDDY ROOSEVELT'S OWN A*C*G ® MAP LINES TO THE MONROE DOCTRINE NATIONS....

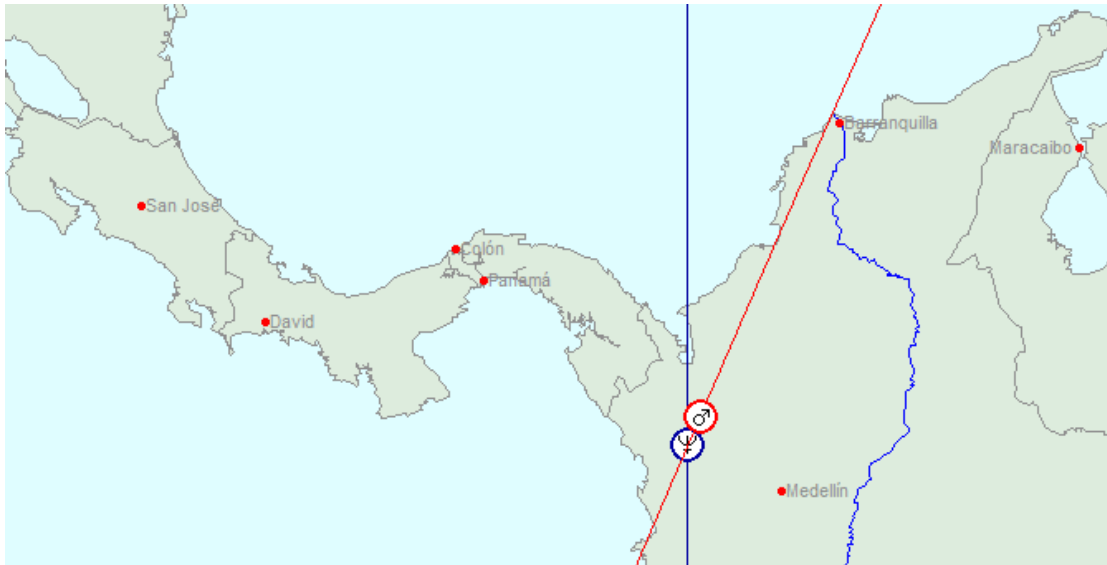


HOROSCOPE OF THE UNITED STATES OF AMERICA....

U.S.A.
 Philadelphia, PA
 Jul 04, 1776
 04:47:00 PM LMT

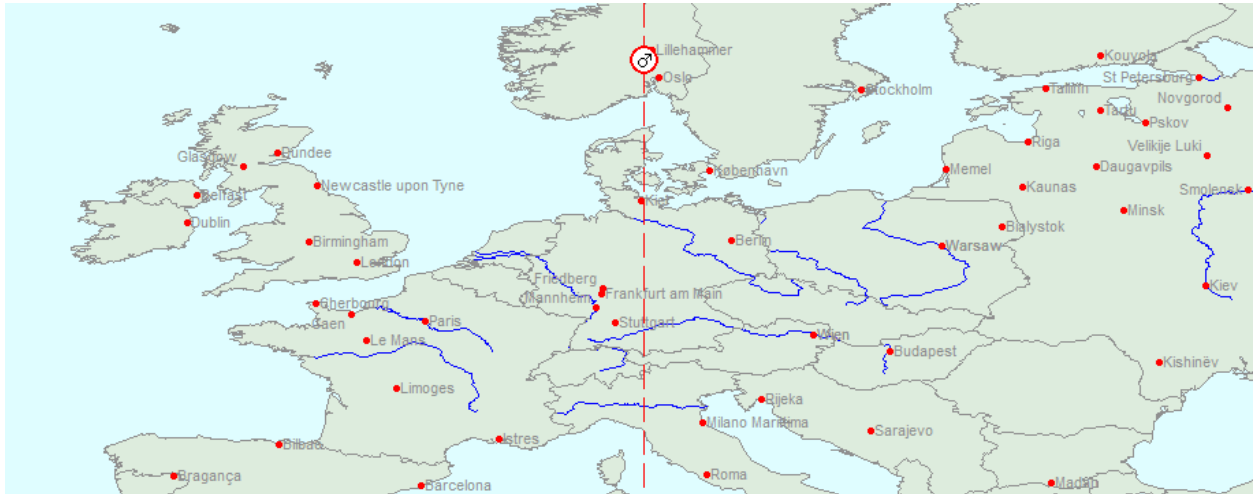


CLOSE-UP OF U.S. RELOCATED TO THE CURRENT PANAMA/COLUMBIA BORDER

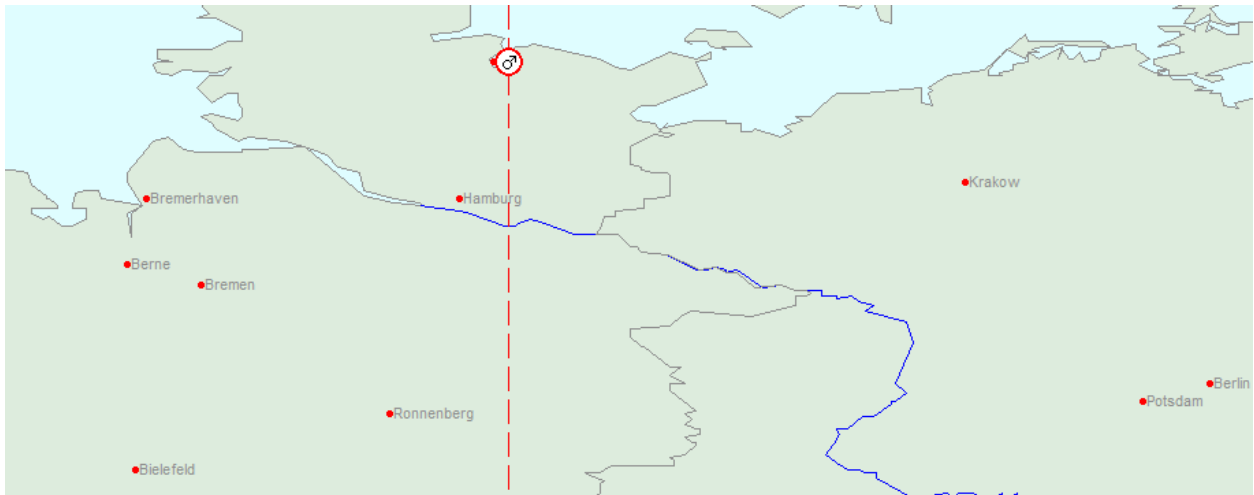


A U.S. Mars **NADIR** line runs north/south along 10 E 12', through German, the nation at the heart of the 1903 Venezuelan Debt dispute; U.S. action was also taken over the nation of Santo Domingo, when she too was threatened by European powers over debts. The U.S. Mars/Neptune pattern can be theorized as a 'War Impulse' in the American character; the U.S. fought two World Wars under the U.S. Mars NADIR, and don't forget those Hessian Soldiers of George III.

THE U.S. RELOCATED TO THE HISTORICAL IMPORTANT BALTIC GERMAN NAVY BASE AT KIEL; BREMERHAVEN, ON THE NORTH SEA, IS LESS THAN 68 MILES TO THE WEST...



CLOSE UP OF THE U.S. AT KIEL, GERMANY, SHOWING NAVAL BASE UNDER THE MAR SYMBOL - EXACT TO THE NAVAL BASE



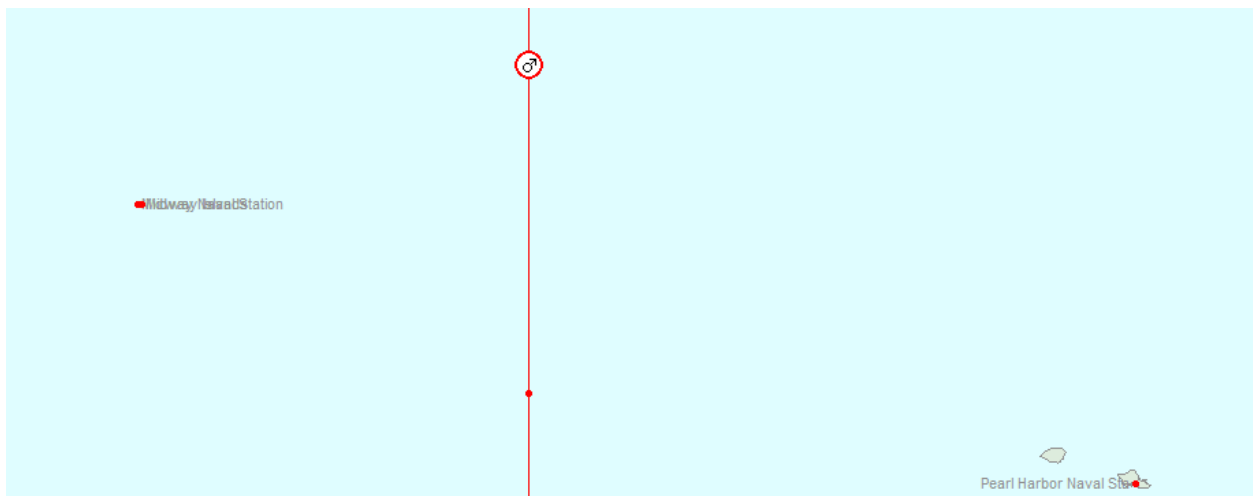
The U.S. horoscope has Mars at **21 Gemini 22'**, in square aspect with Neptune, **22 Virgo 25'**, on her MIDHEAVEN MH ANGLE. The challenge of this pattern, during America's 237 year history, has been illustrated in this discussion. Let us start with President Teddy Roosevelt's horoscope Jupiter and ASC

flush with America's Mars; while his Neptune opposes the U.S. Neptune - exactly 22 Pisces 29' retrograde to 22 Virgo 25'. During Roosevelt's years in office, transit events synchronized almost constant tension, and the Presidential use of force, in places under America's active Mars Zones.

President Teddy Roosevelt's Life purpose was always Jupiterian. He was the perfect instrument for the U.S. at the beginning of the 20th Century. Just prior to, and during his Presidency, the U.S. expansion abroad was exponential; the War with Spain brought new territories spread around the Earth; astrologically, for the U.S., transiting Pluto had crossed into the American 7th House, which corresponds to (from Raphael's Mundane Astrology, from the period) "matters relating to foreign countries, disputes, war, international affairs, and all matters which arise in the dealings of one country with another". This transit alone can account for opening after 130 years, for a sitting American President to journey abroad. In one fell swoop, Roosevelt's 'Opus', his White Fleet' extended U.S. power (Mars) and prestige.

The astrology of the U.S. horoscope even forecasts meaning to remote Midway Island (no place is more remote). Smack in the middle of the Pacific Ocean, between the western coast of the U.S. and Asia, this dot on the Earth was critically important for the U.S., and came into season, synchronized by warfare in the heart of the U.S. Mars **MIDHEAVEN ZONE**. Prior to that moment, on July 5, 12:25 a.m., in the White House, President Roosevelt received a 'Cablegram' from a new cable station (the link of the Hawaii-Guam Cable; transiting Pluto was at 19 Gemini 43', with Mercury at 21 Gemini 41, opposing Uranus at 22 Sagittarius 53' retrograde. The Cablegram read:

"Midway Island inhabitants greet President Roosevelt on completion of the Pacific Cable."



From 1904 and 1908, Teddy Roosevelt ordered 21 Marines to the island to protect the cable and birds. One could say that Teddy Roosevelt served America as an acupuncture needle, stimulating and normalizing U.S. geopolitical interests internationally, whether it is in France and Germany (he lost his youngest son, an Army pilot, on July 14, 1918; a day with the North Node at 21 Sagittarius and Venus at

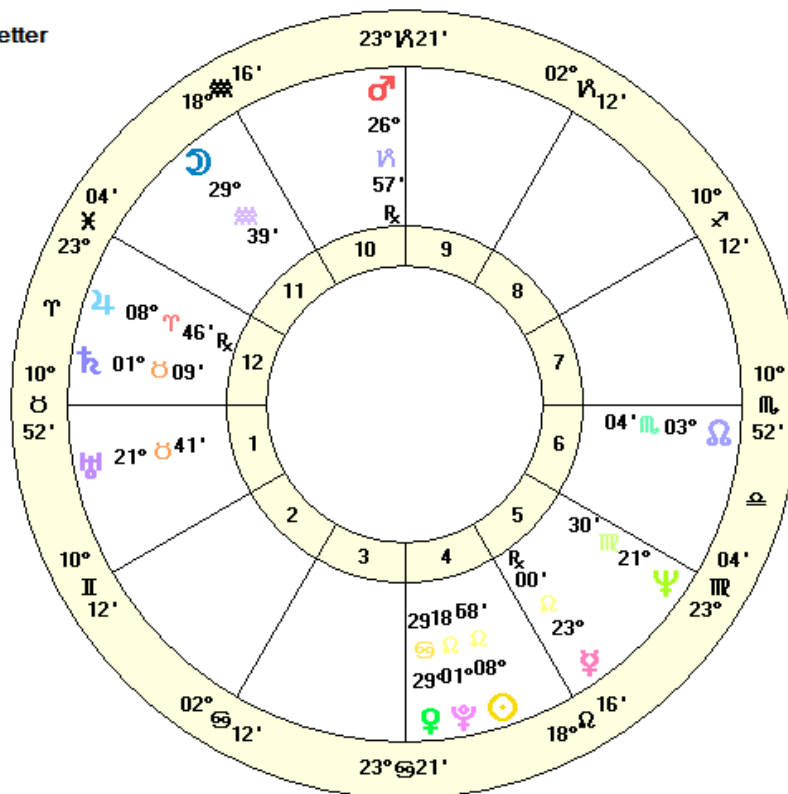
17-18 Gemini), or the Caribbean, or in the middle of nowhere, in the wide Pacific. History would come to record a 'War Impulse' beat in America's war experiences, throughout the 20th Century, under her angular Mars lines.

This Astro*Carto*Graphy® A*C*G tool is the only instrument that this author knows of, by which this story could be told; it renders symbolic dots, of American geographic interests, everywhere knowable; and knowledge of these dots is actionable.

How actionable? During another season of American history, on August 2, 1939, another Roosevelt, FDR, received a letter written and sent by physicists Albert Einstein and Leo Szilard. The purpose of the letter was to encourage FDR to closely monitor and respond with safeguards to Nazi Germany's efforts to create an Atomic Bomb. On that August date, Neptune, for the first time in 165 years, was back at 21 Virgo 30', returning in the U.S. horoscope to 22 Virgo 25'; this followed my theory that the stimulated U.S. Mars/Neptune Pattern synchronizes America's 'War Impulse' button (military events), stimulated by activity in Germany. Here is the horoscope of that profound moment that lead directly to America's building the 1st Atomic Bomb:

HOROSCOPE OF THE 1ST EINSTEIN-SZILARD 'ATOMIC' LETTER TO FRANKLIN D. ROOSEVELT....

Einstein-Szilard-letter
 Princeton, NJ
 Aug 02, 1939
 00:00:00 AM EDT



Other astrological indicators in this Einstein-Szilard Letter chart also reveal a strong Mars to the U.S. horoscope; the transiting Mars was waxing (26 Capricorn 57' retrograde) to the conjunction of the U.S.

Pluto (27 Capricorn 34'), and it was 'way-out-of-bounds' by declination, at -27 08'. Albert Einstein, whose horoscope Sun is at 23 Pisces 30', has his own Mars at 26 Capricorn 55'. The importance of the U.S. Pluto at 27 Capricorn 34', is another awesome U.S. astrological Astro*Carto*Graphy® A*C*G story, which will be told soon.

My 8th Grade English teacher, Ms Willard, would always say, "A little knowledge is a dangerous thing". It stuck to my ribs like my mother's hot oatmeal; to this day, I still ponder that one.